



FALLPROTEC

Height Safety Products

since
2004
always innovative

Active Fall protection
Horizontal lifeline HLL

SecuRope®

Applications on



Industrial | Housing | Buildings | Fall Arrest | Work in restraint



Up to 2 users

36' max. between fixations

Freehand system

Undeformable

Reduced cable swag

Stainless steel AISI316

Energy absorption mechanism on
orientable intermediate anchors

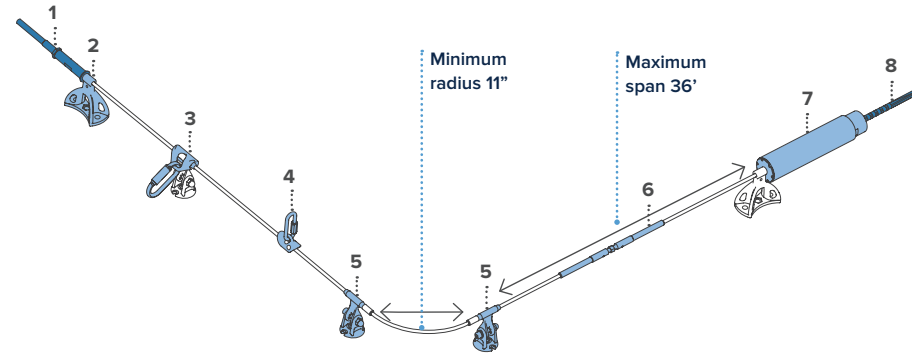
Wide range of brackets for
all structures

Possibility of custom-made solutions with
the Tie Down & Fallprotec's engineering
department



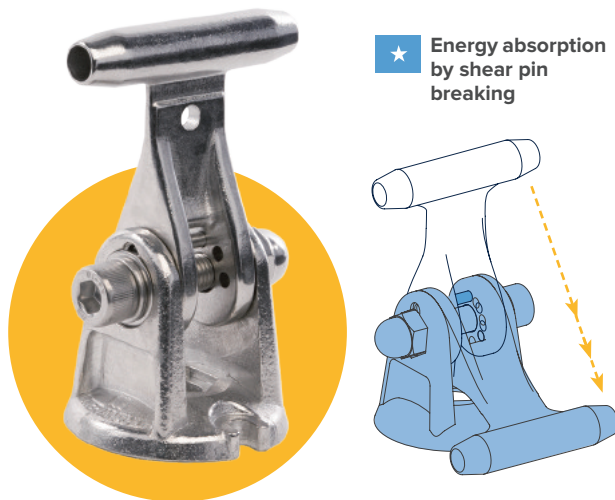
Compliant with ANSI Z359.6

Horizontal SecuRope lifeline directly on concrete



- | | | | |
|------------------|------------------|------------------|------------------|
| 1 LDV137 (13636) | 3 LDV001 (13627) | 5 LDV043 (13634) | 7 LDV032 (13632) |
| 2 LDV002 (13628) | 4 LDV060 (13687) | 6 LDV138 (13688) | 8 LDV008 (13629) |

Intermediate anchors for horizontal lifelines



The NEO anchor is roof protecting thanks to its integrated shock absorbing system. Reusable after stopping a fall.

LDV043 (13634)



The EVO anchor, a competitive solution, has been specifically designed for concrete grounds and rigid structures.

LDV083 (13689)

	LDV043 (13634)	LDV083 (13689)
Energy absorbing	•	
Undeformable	•	•
Stainless steel components	•	•
Suitable for fragile structures	•	
Available in copper alloy for ATEX environments	•	



Glider with steel carabiner

Tie Down & Fallprotec offer a wide range of gliders adapted to each type of situation. Delivered with steel carabiners, the glider passes smoothly over the intermediate anchors, letting the user move freely along the lifeline.

1. LDV001 (13627)
2. LDV043 (13634)

Active Fall protection
Horizontal lifeline HLL

SecuRope® Brackets

Applications on



Industrial | Housing | Buildings | Fall Arrest | Work in restraint



Up to 2 users

Energy and dilatation absorbing

No drilling needed for the standing seam fixation

Wide range of clamps for seams

Aluminum and stainless steel components.
Copper also available

Hot deck fixation compatible with all
bituminous structures and most EPDM

Reinforced toggle bolt

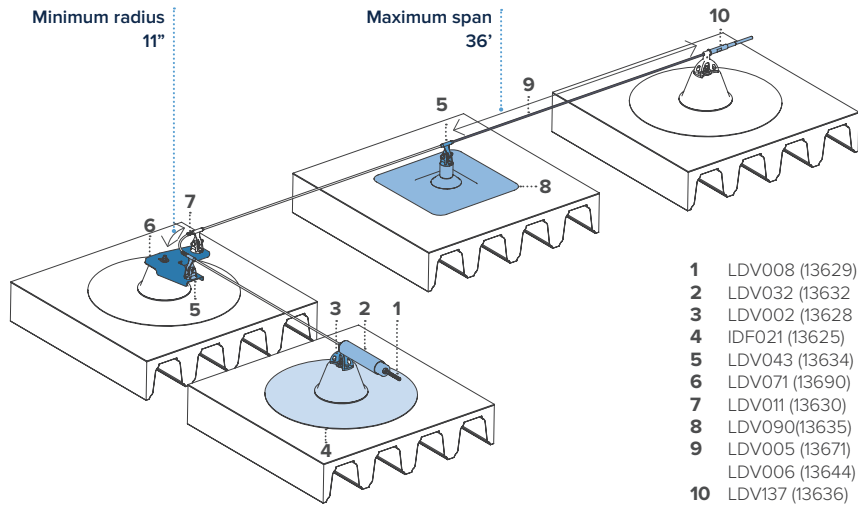
Available with bituminous or PVC-P
membranes

Compatible with Securope, and Securail Pro

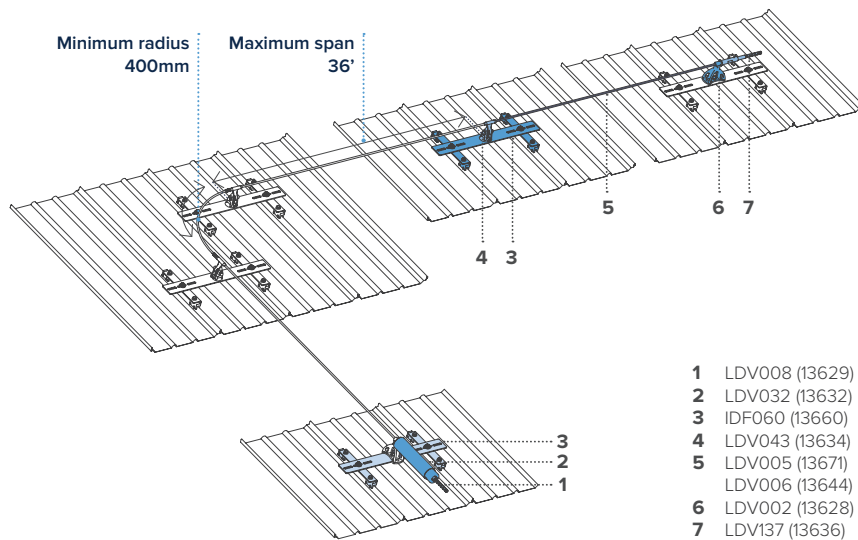


Compliant with ANSI Z359.6

SecuRope NEO on hot deck brackets



SecuRope NEO on standing seam roof

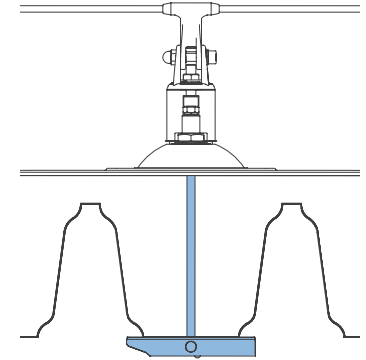


The Multipost and SpotAnchor are designed for hot deck roofs.

High resistance toggle bolts enable the fixation on corrugated metal sheets, wooden panels or precast concrete.

Only the toggle bolts passes through the isolation, then thermal bridges are minimized. The roofing collar, in bitumen or PVC-P, is prefitted in the factory to guarantee the waterproofness.

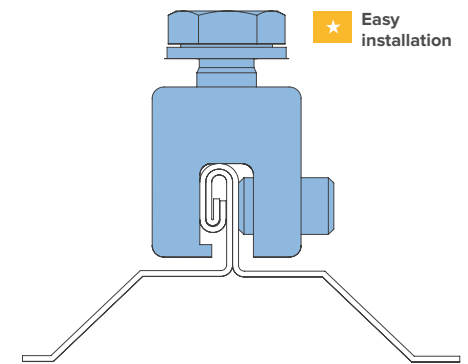
The SpotAnchor is fixed by a reinforced toggle bolt FAS005 (13621). This allows a distribution of forces on a large surface.



The fixing bracket for standing seam roof is clamped on the seam and doesn't require any perforation. The clamps combine high pull out and shear strength.

Combined with the SecuRope NEO lifeline, the system completely absorbs the dilatation and contraction of the standing seam roof.

Easy to install on new constructions or existing buildings. Fallprotec provides different clamp types to match the corresponding standing seam roof.



Active Fall protection
Horizontal lifeline HLL

SecuRope® Overhead

Applications on



Industrial | Housing | Buildings | Fall Arrest | Work in restraint



Up to 2 users

Undeformable

Can be used with retractable fall arresters

Also for curved sections (minimum radius: 11")

The glider passes smoothly over NEO anchor with a retractable fall arrester

Often used in the industry for works above machines, recommended for a distance between the lifeline and the walkway up to 23'

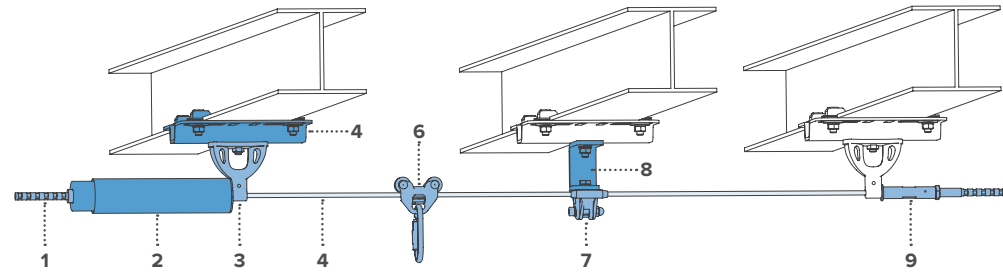
Can be installed in corrosive environments



Compliant with ANSI Z359.6

- Securope overhead lifeline. Most used configuration for industrial halls as the overhead lifeline reduces the fall distance.

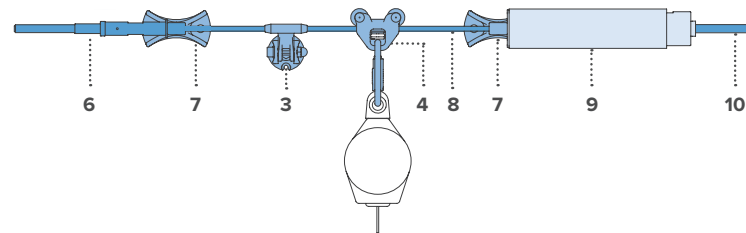
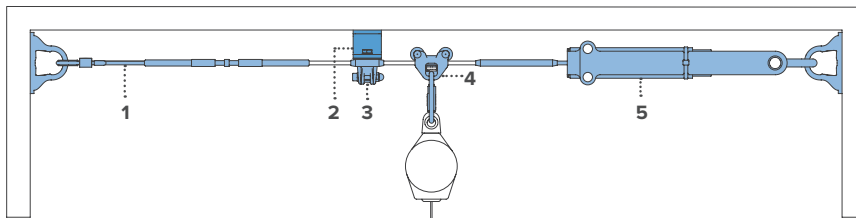
Securope horizontal overhead on steel beams



- | | | | | |
|------------------|------------------|------------------|------------------|------------------|
| 1 LDV008 (13629) | 3 LDV002 (13628) | 5 LDV005 (13671) | 7 LDV043 (13634) | 9 LDV137 (13636) |
| 2 LDV003 (13643) | 4 IDF050 (13671) | 6 LDV141 (13637) | 8 LDV134 (13672) | |

The NEO Securope lifeline can be attached to beams through a system of clamps. Using this type of fastening enables a solid fixation of the lifeline without drilling. Particularly useful for industrial configurations, the Securope NEO lifeline with crimping rings can stop a fall with very low cable deflection.

NEO Securope Lifeline between two walls and NEO Securope Lifeline on wall configuration



- | |
|-------------------|
| 1 LDV054 (13677) |
| 2 LDV134 (13672) |
| 3 LDV043 (13634) |
| 4 LDV141 (13637) |
| 5 LDV139 (13678) |
| 6 LDV137 (13636) |
| 7 LDV002 (13628) |
| 8 LDV005 (13671) |
| 9 LDV032 (13632) |
| 10 LDV008 (13629) |

* Super smooth gliding



Gliders and intermediate anchor NEO with fixing assembly

The fixing assembly enables a gap between the ceiling and the wire rope large enough to let the glider pass easily. The glider equipped with rollers enables a smooth gliding even with a retractable block.

LDV141 (13637), LDV060 (13687), LDV043 (13634 and LDV134 (13672)

Active Fall protection
Horizontal lifeline HLL

SecuRail® Pro

Applications on



Industrial | Housing | Buildings | Over Trucks | Fall Arrest | Work in Restraint | Rope Access



Up to 2 users

Span up to 20'

1,2 lbs/foot

Low deflection

High grade aluminum rigid rail

Absorbs dilatation / contraction

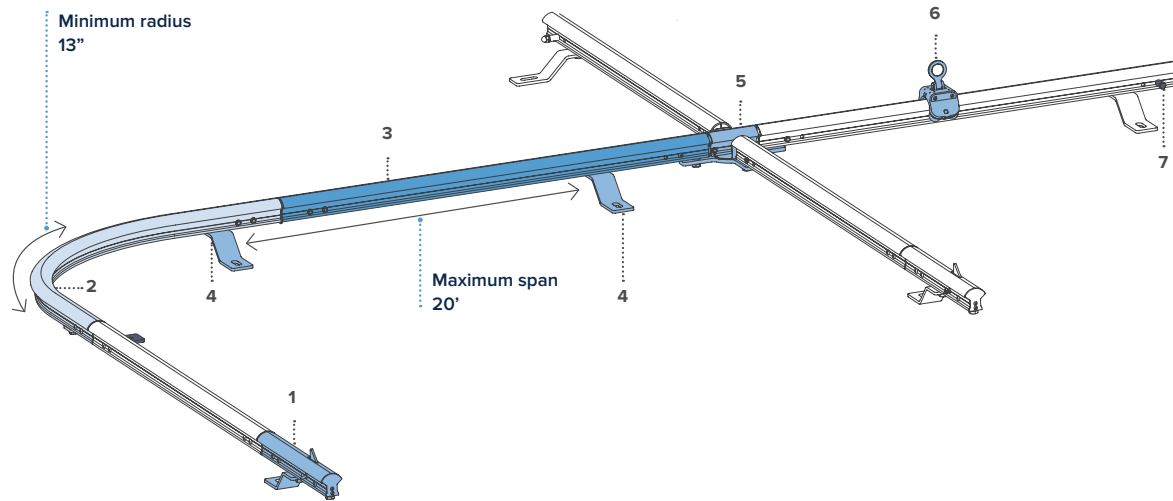
Possibility of custom-made solutions with
the Tie Down & Fallprotec's engineering
department

Compliant with ANSI Z359.6



- > The SecuRail Pro is a rigid and versatile fall arrest rail. This unique profile has a high inertia that enables a 20' span between supports. It is ideal for work sites with low fall clearance

Horizontal SecuRail 2016 lifeline on ground

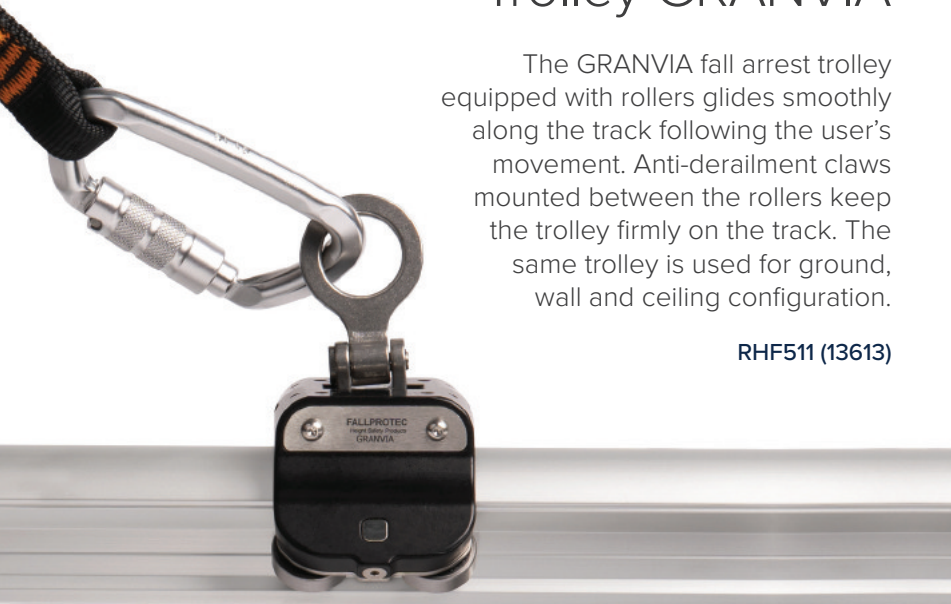


- 1 RHF509 (13612)
- 2 RHF504 (13674)
- 3 RHF552 (13620)
RHF553 (13649)
- 4 RHF516 (13686)
- 5 RHF510 (13673)
- 6 RHF511 (13613)
- 7 RHF514 (13615)

Trolley GRANVIA

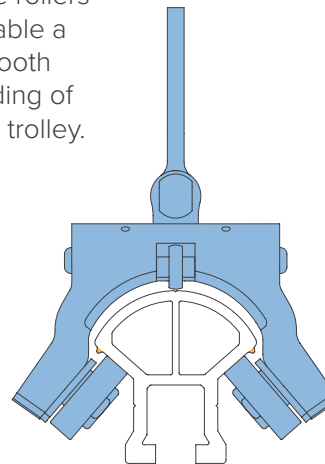
The GRANVIA fall arrest trolley equipped with rollers glides smoothly along the track following the user's movement. Anti-derailment claws mounted between the rollers keep the trolley firmly on the track. The same trolley is used for ground, wall and ceiling configuration.

RHF511 (13613)



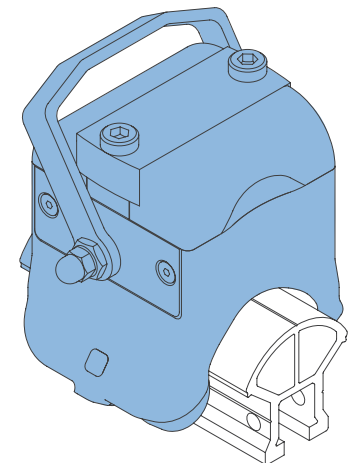
Trolley GRANVIA

The rollers enable a smooth gliding of the trolley.



Overspeed trolley

The trolley works either for inclined and horizontal lifelines. This allows the assembly of horizontal lifelines with inclined span, all in one, avoiding the user's disconnection.



Active Fall protection
Horizontal lifeline HLL

SafeAccess® fall arrest

Applications on



Industrial | Over Trucks | Fall Arrest



Up to 2 users

3,4 lbs / foot

Span up to 20'

Undeformable

ATEX certified

High grade aluminum rigid rail

Possibility to fold away the Alsipercha and SafeAccess system when not in use

Possibility of custom-made solutions with the Tie Down & Fallprotec's engineering department



Compliant with ANSI Z359.6

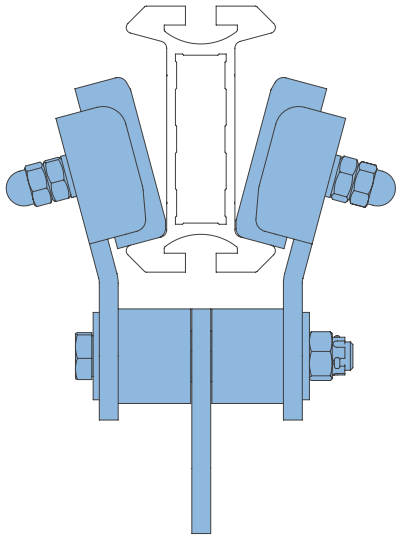
- > The SafeAccess is an undeformable fall arrest rail for industrial applications. Installed in overhead configuration, it is the most suitable system when the fall clearance is low.

ATEX certified for potentially explosive atmospheres, this rail is also ideal for petrochemical industries.

The aluminium rail is protected by a high-quality powder coated surface treatment that resists to marine environment.

The NAV 2 trolley equipped with rollers follows smoothly without any action from the end user.

Trolley NAV 2



The SafeAccess rail combined with a safety block enables the safest possible fall arrest.

MHS023 (13606)

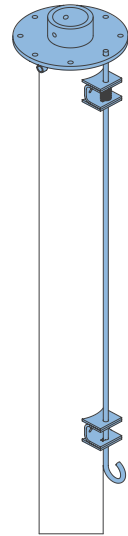
Horizontal fall arrest

The Alsipercha is a standardized outrigger beam to secure loading bays and machinery. Equipped with an integrated energy absorber, it is a lightweight and yet robust design for industrial applications with a minimum fall clearance of 13'.

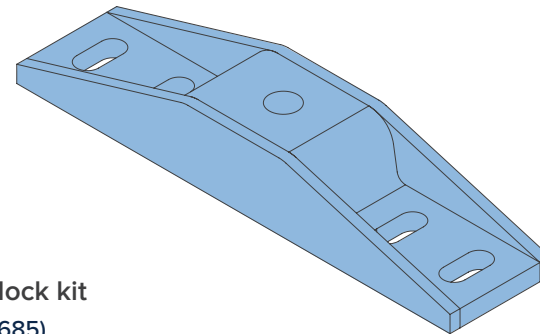
Combined with the SafeAccess fall arrest rail for access on top of vehicles.

Several configurations (mobile, fixed on ground, fixed on wall...) are available.

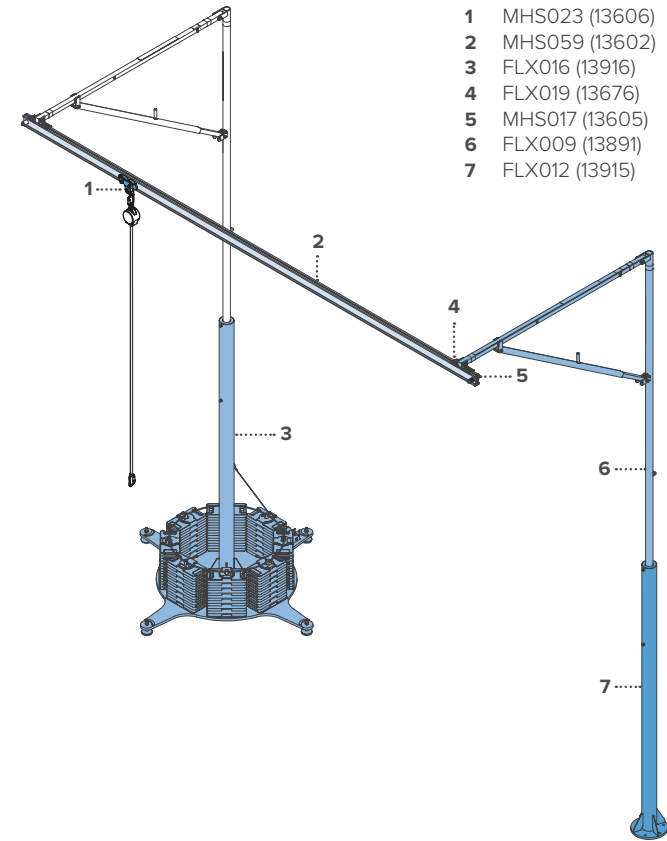
Products for foldable system



Rotatory lock kit
FLX017 (13685)



Rotatory Junction
Alsipercha-SafeAccess
FLX018 (13692)



- 1 MHS023 (13606)
- 2 MHS059 (13602)
- 3 FLX016 (13916)
- 4 FLX019 (13676)
- 5 MHS017 (13605)
- 6 FLX009 (13891)
- 7 FLX012 (13915)

Active Fall protection
Vertical lifeline VLL

SecuRope® QuickSet

Applications on



Industrial | Housing | Buildings | Vertical Structures | Confined Spaces | Fall Arrest

Opening glider with safety lock

Easy mounting

Overpassing anchors

Cable vibration absorption system

Swagless system

No deformation of the intermediate anchors

Two options: Absorber integrated in the glider or on top of the lifeline



Compliant with OSHA 19010.29 | ANSI A14.3

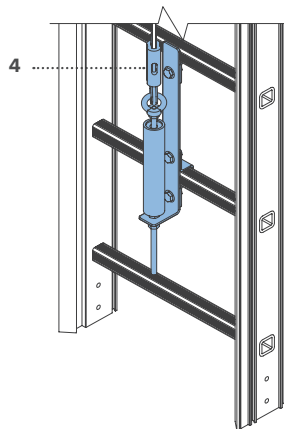
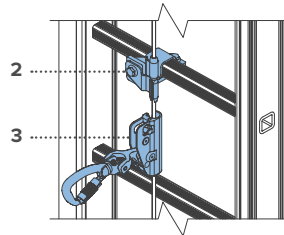
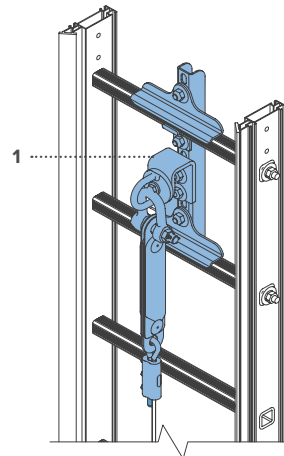
➤ The SecuRope QuickSet is designed for wind turbines, pylones, masts or industrial sites. This flexible system is used with stainless steel cables. The glider is openable and can be inserted or removed at any point of the cable.

Two types of fall arrest systems are possible with this lifeline.

Type 1: Energy absorber fixed on the top anchor. It is permanently fixed on the lifeline.

Type 2: Energy absorber fixed on the opening glider. The glider locks instantly in case of a fall, triggering the energy absorption device.

SecuRope QuickSet Vertical lifeline type 1 with absorber on



Ladder lifeline

- 1 LDV232 (13655)
- 2 LDV241 (13647)
- 3 LDV255(13648)
- 4 LDV266 (13646)

New ZIP! fall arrest opening glider fitted with energy absorber

Passing smoothly through the anchors, the glider locks in case of a fall.

LDV255 (13648)



Active Fall protection
Vertical lifeline VLL

SecuRail® Pro MastLadder

Applications on



Industrial | Housing | Buildings | Confined Spaces | Vertical Structures | Fall Arrest

Light aluminum rail

Undeformable

Freehand system

On ladder or with fixed rungs (MastLadder)

Easy use

Trolley equipped with an energy absorber

Possibility of custom-made solutions with
the Tie Down & Fallprotec's engineering
department



Compliant with OSHA 19010.29 | ANSI A14.3

➤ The SecuRail Pro Vertical is a rigid lifeline to secure access on any structure. When clamped on an existing ladder it secures the end user much better than the regular safety hoops.

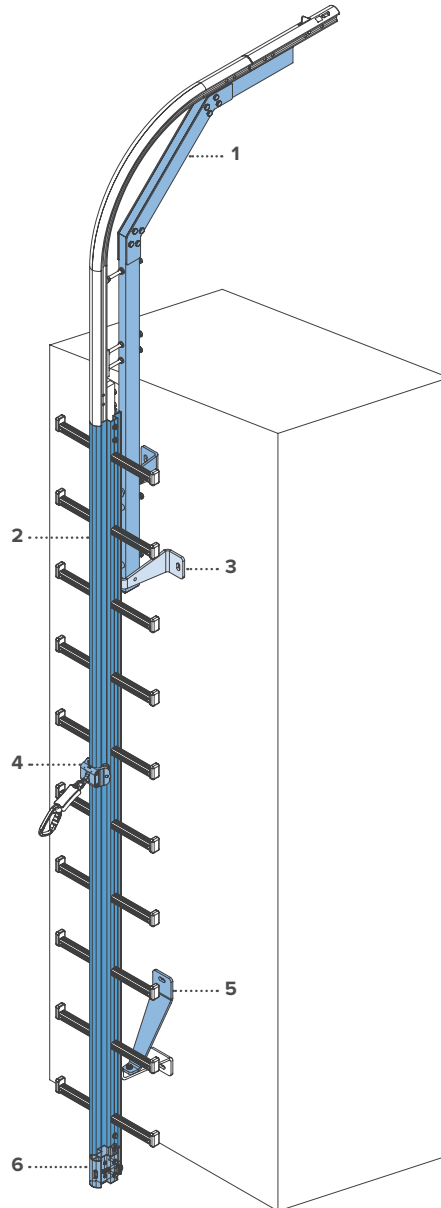
A MastLadder fitted with fixed rungs is designed for confined spaces, for industrial halls or for telecommunication towers. Undeformable stainless steel brackets connect the MastLadder to the structure.



SecuRail MastLadder and SecuRail Pro Vertical lifeline clamped on a ladder

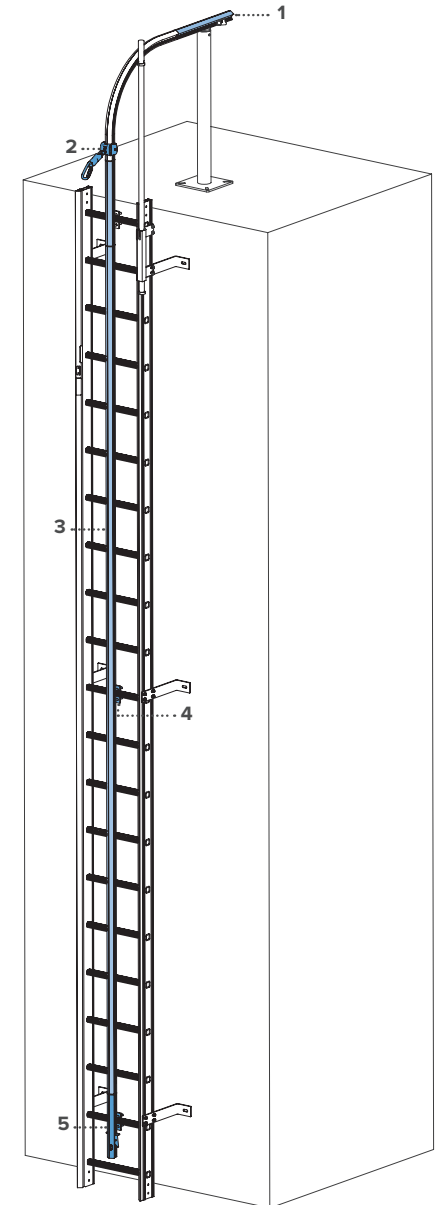
MastLadder lifeline

- 1 RHF715 (13679)
- 2 RHF700 (13680)
- 3 RHF712 (13681)
- 4 RHF518 (13616)
- 5 RHF710 (13682)
- 6 RHF708 (13683)



SecuRail Pro

- 1 RHF520 (13617)
- 2 RHF518 (13616)
- 3 RHF552 (13620)
RHF553 (13649)
- 4 RHF521 (13618)
- 5 RHF522 (13619)



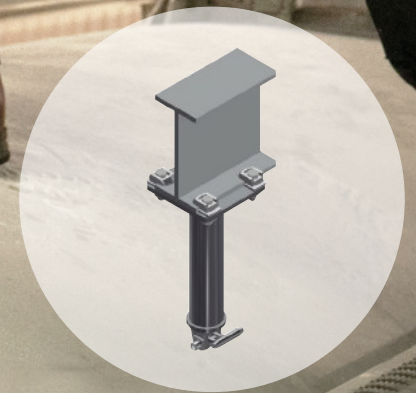
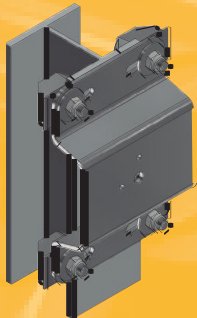
Active Fall protection
Horizontal Fall Arrest

Overhead lifeline installation

in a packaging and
unloading company

The Result

- 50m of SecuRope
lifeline
- 6 types of bespoke
fixation assemblies,
adapted to various
beam sizes



Active Fall protection
Horizontal Fall Arrest

SecuRail® Pro

Train station

The Result

- 14 powder coated bended rails on demand of 6m each
- 25 bespoke fixing assemblies
- 10 anchor points LDV029 (13666)



Active Fall protection
Horizontal Fall Arrest

SafeAccess® on Alsipercha

Cement factory

The Result

- 6 Alsiperchas
- 6 fixing brackets on steel beams
- 24m of SafeAccess rail



United States of America
TIE DOWN

605 Stonehill Dr. SW
Atlanta, GA 30336
T: 404-344-0000
customerservice@tiedown.com

Luxembourg
FALLPROTEC SA

43-45, ZA Op Zaemer
4959 Bascharage
T: +352 26 55 09 30
F: +352 26 55 09 30 55
marketing@fallprotec.com

Spain
FALLPROTEC SL

C/ Eduard Calvet i Pintó 4
Pol. Ind. Vallmorena
08339 Vilassar de Dalt
T: +34 93 114 22 31
info@fallprotec.es



WARNING: Products described in this catalog may contain chemicals, including Nickel, which are known to the State of California to cause cancer. For more information go to: www.P65Warnings.ca.gov.